

PALOUSE ICE ARENA

This dynamically lit arena is graceful and sinuous, analogous to the skills presented on the ice. Using wood for the primary structure, concrete and steel accent a warm atmosphere synthesizing into one complete form that will be able to support hockey, skating and other ice sports.



PRECEDENT - MAJORI PRIMARY SCHOOL SPORTS HALL SUBSTANCE ARCHITECTS



- POLYCARBONATE GLAZING SYSTEM ALLOWS DAYLIGHT TO DIFFUSE INTO THE RINK WHILE AT NIGHT CREATING A DRAMATIC ATMOSPHERE

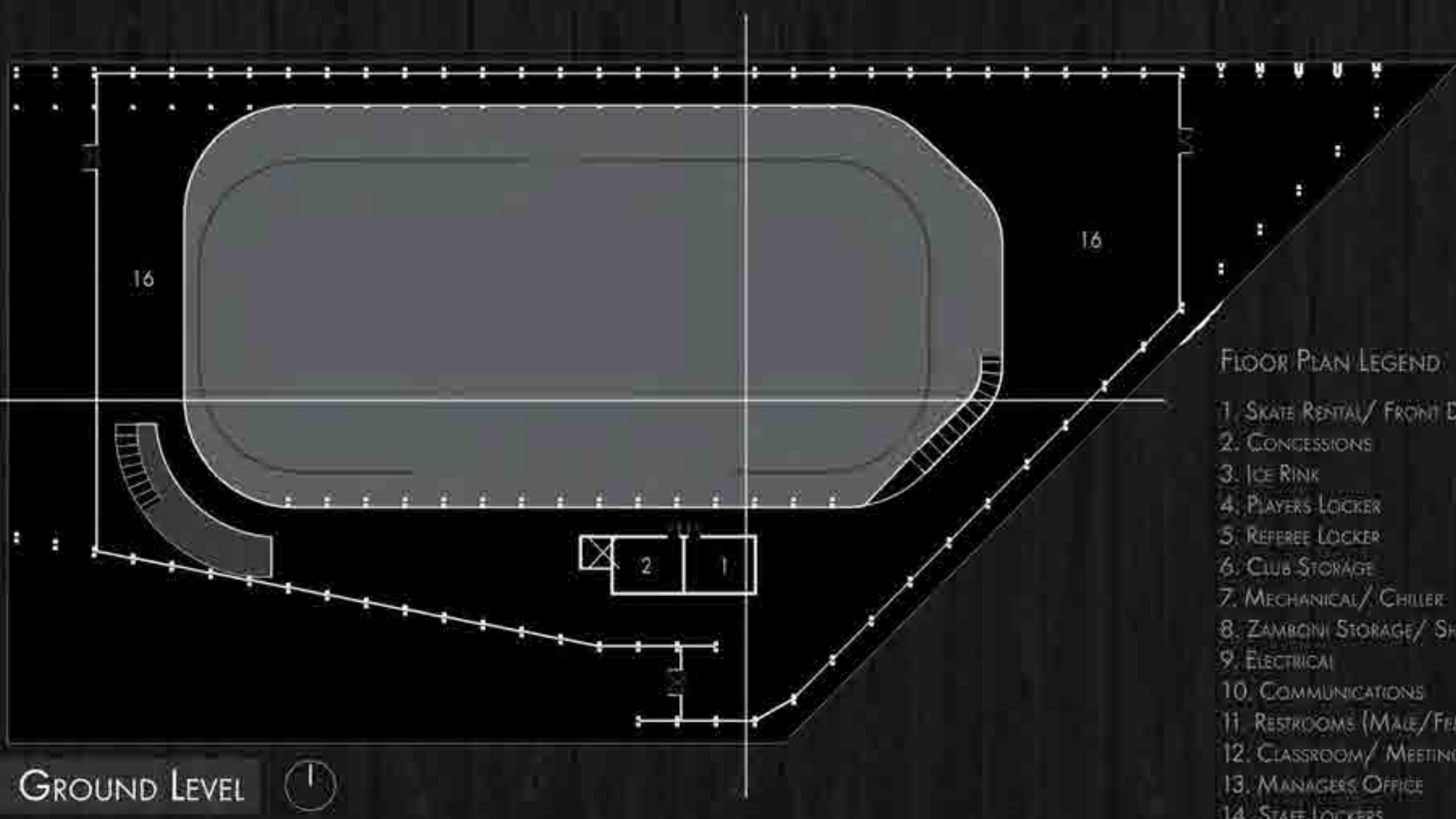


WEST ELEVATION 1/32" - 1'0"

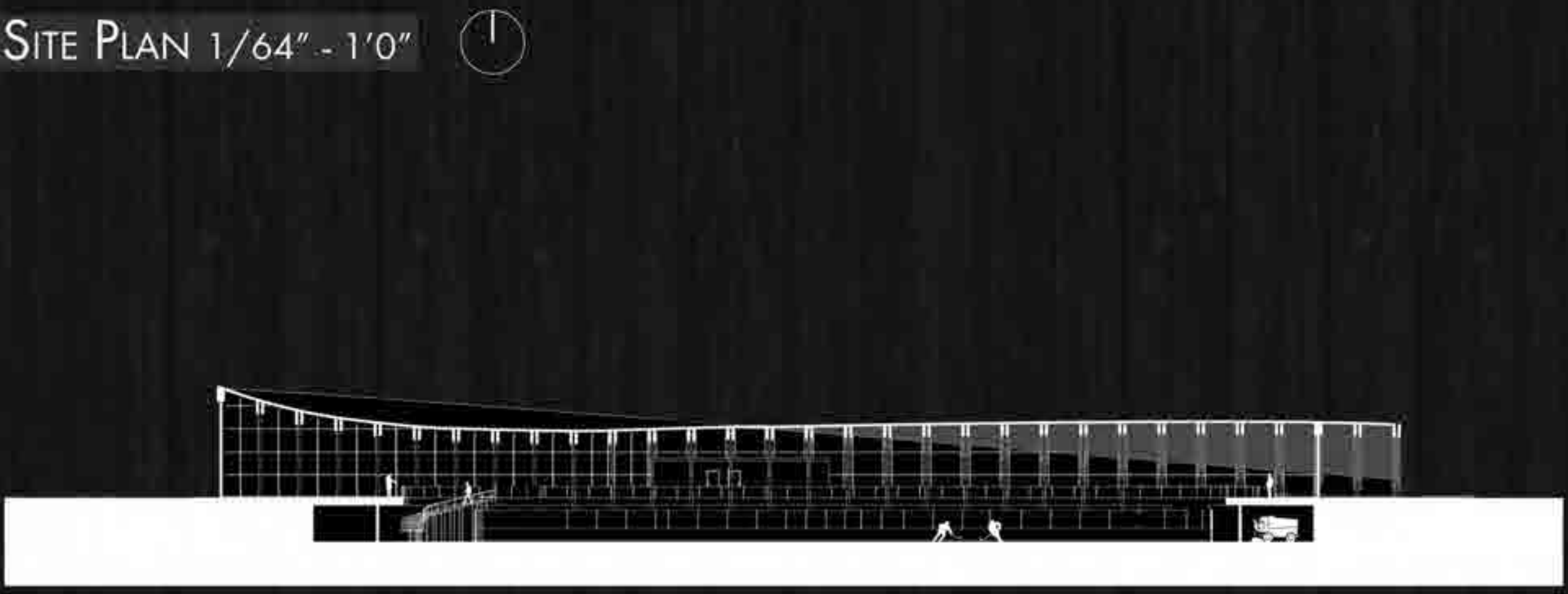
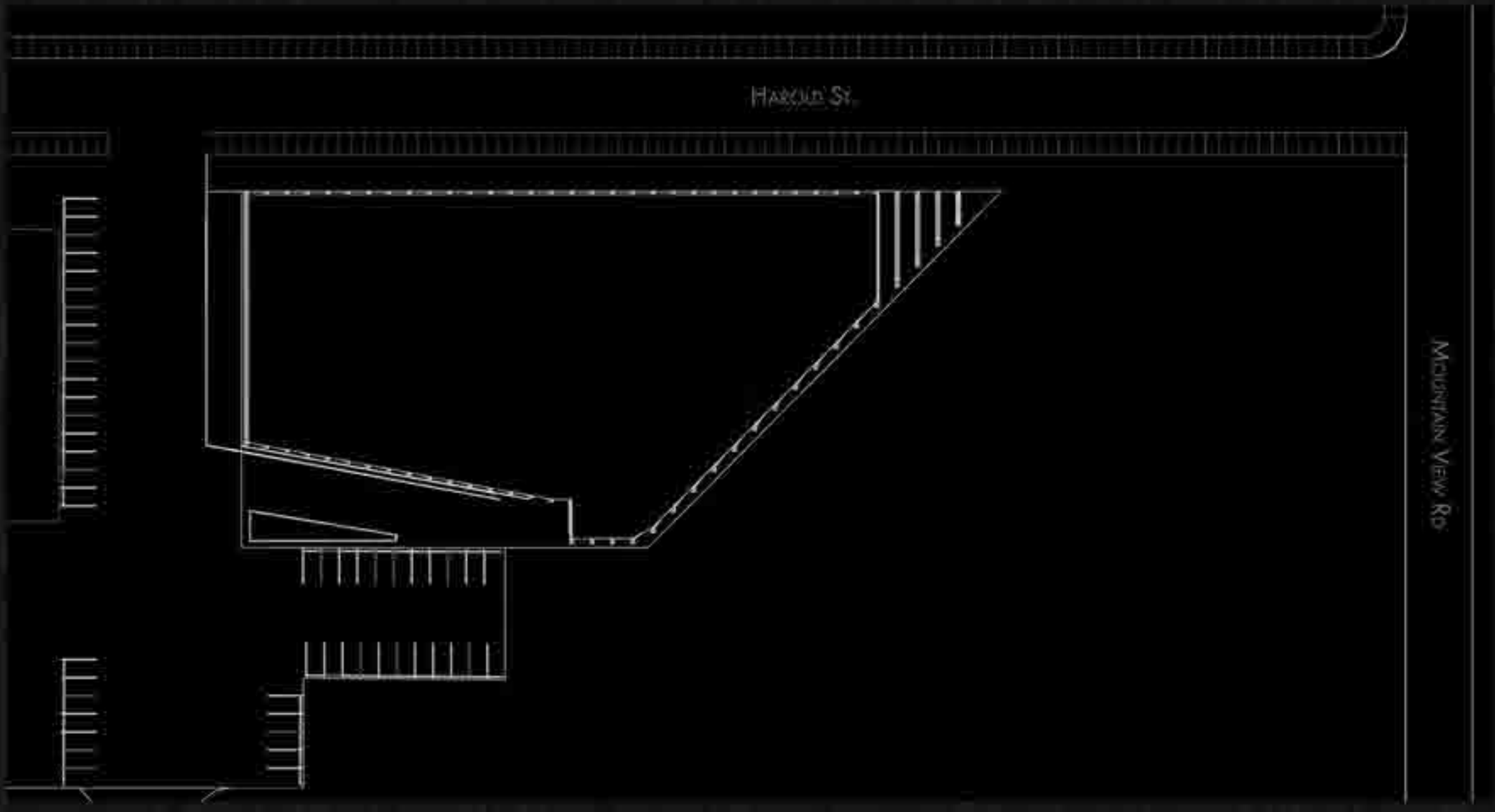
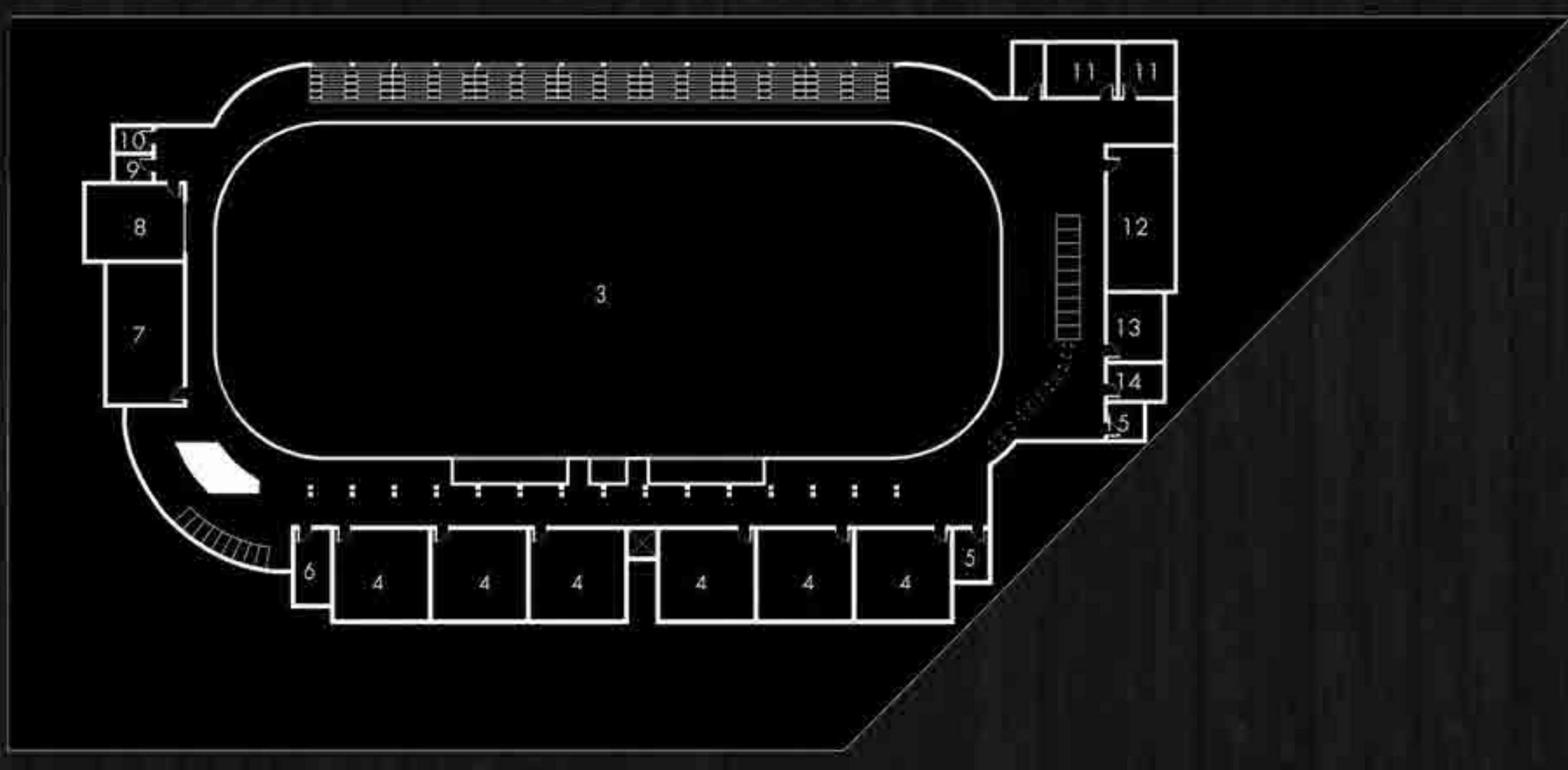


NORTH ELEVATION 1/32" - 1'0"





- FLOOR PLAN LEGEND
1. SKATE RENTAL/ FRONT DESK
 2. CONCESSIONS
 3. ICE RINK
 4. PLAYERS LOCKER
 5. REFEREE LOCKER
 6. CLUB STORAGE
 7. MECHANICAL/ CHILLER
 8. ZAMBONI STORAGE/ SHOP
 9. ELECTRICAL
 10. COMMUNICATIONS
 11. RESTROOMS (MALE/FEMALE)
 12. CLASSROOM/ MEETING ROOM
 13. MANAGERS OFFICE
 14. STAFF LOCKERS
 15. SKATE SHARPENING
 16. INFORMAL VIEWING DECK



CONSTRUCTION DETAILS

GLULAM SPANNING SYSTEM WITH INTEGRATED TRUSSES AND STEEL CROSS BEAMS
 - DOUGLAS FIR TIMBER COLUMNS AND GLULAMS
 - STEEL PLATE FASTENERS FOR TRUSS EXTENSION AND COLUMN TO FOOTING CONNECTION

