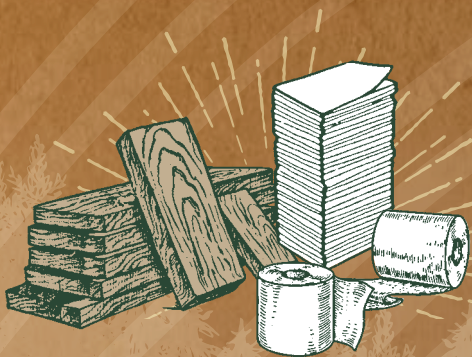




Manage | Harvest | Plant | Repeat



\$2.4  
Billion

IDAHO'S FOREST SECTOR ADDS BIG VALUE

IDAHO'S FOREST SECTOR CONTRIBUTES \$2.4 BILLION\* OF FINISHED GOODS AND SERVICES TO IDAHO.

\*2019 DATA

COMPETITIVE, GOOD WAGES FOR IDAHOANS

\$55,000  
Annual salary



THE AVERAGE ANNUAL SALARY FOR A FOREST PRODUCTS WORKER IS MORE THAN \$55,000.

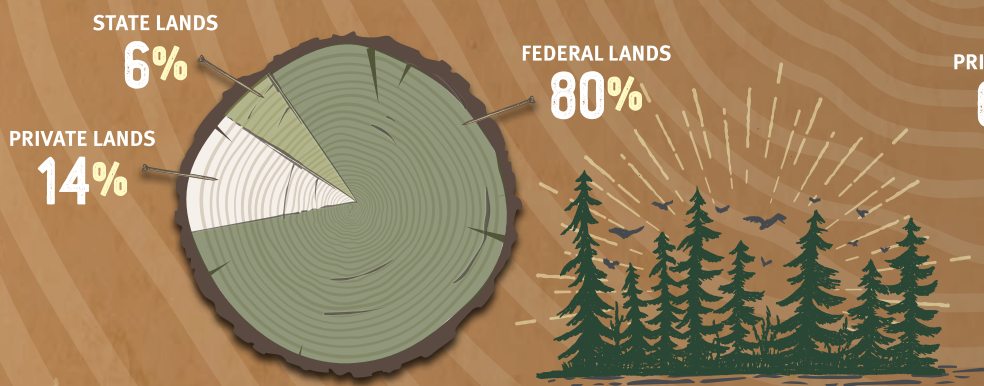
RELIABLE EMPLOYMENT FOR THOUSANDS OF HARDWORKING IDAHOANS

31,000+ Jobs



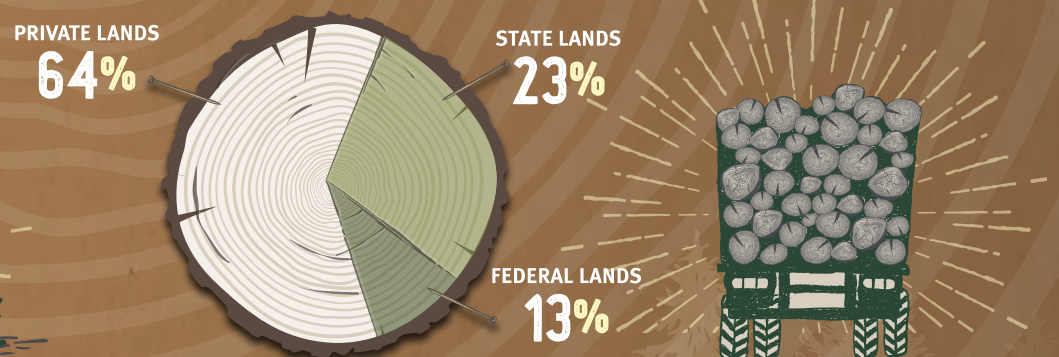
MORE THAN 31,000 PEOPLE WORK IN GREEN COLLAR JOBS RELATED TO THE FOREST SECTOR IN IDAHO, INCLUDING TIMBER HARVESTING; AND WOOD, PAPER AND FURNITURE MANUFACTURING.

21.5 MILLION ACRES OF FORESTLANDS IN IDAHO



THERE ARE 21.5 MILLION ACRES OF FORESTLANDS IN IDAHO MANAGED BY A VARIETY OF OWNERS: 80% ARE OWNED AND MANAGED BY THE FEDERAL GOVERNMENT; 6% BY THE STATE OF IDAHO; AND 14% BY PRIVATE LANDOWNERS.

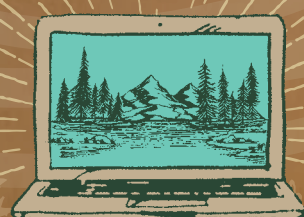
16.5 MILLION ACRES ARE PRODUCTIVE TIMBERLANDS



16.5 MILLION ACRES OF IDAHO FORESTLANDS ARE PRODUCTIVE "TIMBERLAND" WHERE TREE HARVEST IS ALLOWED: 64% OF TIMBER HARVESTS COME FROM PRIVATE LANDS; 23% COME FROM STATE LANDS; AND ONLY 13% COME FROM FEDERAL LANDS.

FUNDING IDAHO EDUCATION

\$52+ million for Schools



EVERY YEAR, PROCEEDS FROM TIMBER HARVESTED ON STATE ENDOWMENT LANDS GOES TO IDAHO'S PUBLIC SCHOOL SYSTEM. IN 2020, MORE THAN \$52 MILLION WENT TO SCHOOLS THROUGHOUT THE STATE. SINCE 1951, PROCEEDS FROM TIMBER HARVESTS ON STATE LANDS HAVE CONTRIBUTED MORE THAN \$1 BILLION TO IDAHO SCHOOLS.





Manage | Harvest | Plant | Repeat



## Thin the THREAT

MANAGING FORESTS PREVENTS CATASTROPHIC WILDFIRES

INSECT AND DISEASE OUTBREAKS AND DRIER CONDITIONS HAVE RESULTED IN VAST AREAS OF UNHEALTHY FORESTS IN IDAHO AND WILDFIRES THAT LEAD TO LOSS OF LIFE AND PROPERTY. MANAGEMENT TECHNIQUES SUCH AS THINNING AND HARVESTING CAN RESTORE OUR FORESTS, MAKE THEM MORE SUSTAINABLE AND PROTECT THEM FROM CATASTROPHIC WILDFIRE.

MANAGE. HARVEST. PLANT. REPEAT.

## For every harvested Tree 7 GROW



FOR EVERY TREE HARVESTED, SEVEN MORE ARE GROWING IN ITS PLACE. WE MANAGE, HARVEST, PLANT AND REPEAT TO ENSURE THAT IDAHO FORESTS ARE SUSTAINED AND HEALTHY FOR GENERATIONS TO COME.

#IDAHOFORESTSFOREVER

HEALTHY FORESTS DO GOOD

## Healthy FORESTS healthy Idaho



MANAGED FORESTS PROVIDE GOOD JOBS FOR IDAHOANS; RENEWABLE AND RELIABLE PRODUCTS USED EVERY DAY; RECREATIONAL OPPORTUNITIES FOR EVERYONE; AND CLEAN AIR AND WATER. MANAGED FORESTS ARE HEALTHY FORESTS AND A HEALTHY FOREST MAKES FOR A HEALTHY IDAHO.

A POSITIVE CLIMATE SOLUTION

## Idaho's forests and the CLIMATE

ALL OF IDAHO'S FORESTS PROVIDE AN ESSENTIAL AND IMPORTANT SERVICE FOR OUR CLIMATE: CARBON SEQUESTRATION. FORESTS ARE LIKE SPONGES. THEY ABSORB AND STORE CARBON DIOXIDE, A GREENHOUSE GAS. AT THE SAME TIME, TREES RELEASE OXYGEN INTO THE ATMOSPHERE. WHEN TREES ARE HARVESTED THE CARBON CONTINUES TO BE STORED IN THE WOOD OVER THE LIFETIME OF THE PRODUCT. MANUFACTURING WOOD PRODUCTS REQUIRES LESS WATER AND ENERGY AND FAR LESS FOSSIL FUELS THAN STEEL, PLASTIC OR CONCRETE.



JANUARY 2020 | IDAHOFORESTS.ORG  
PRODUCED IN PARTNERSHIP WITH:

