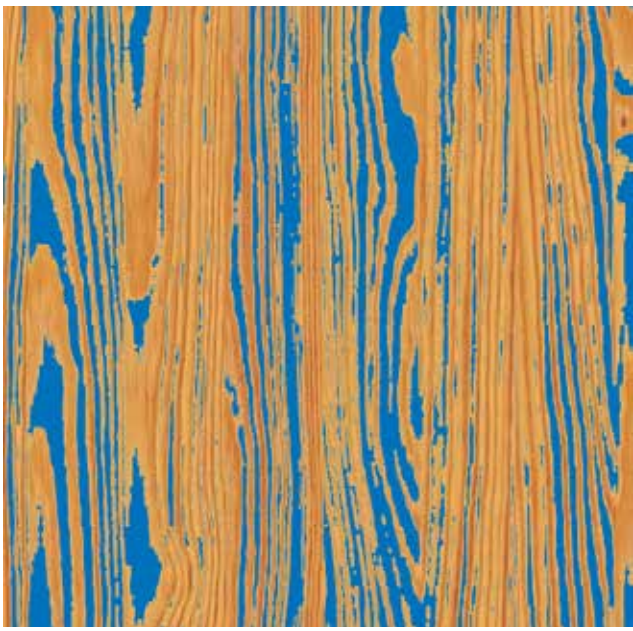


Concept



Woven like the campus quilt,  
a missing patch is being filled



Woven like the wood grains  
residing within the tree



Woven like the tree branches  
high up off the ground

Parti- Section/Elevation



Site Plan 1'-0" = 1/64"

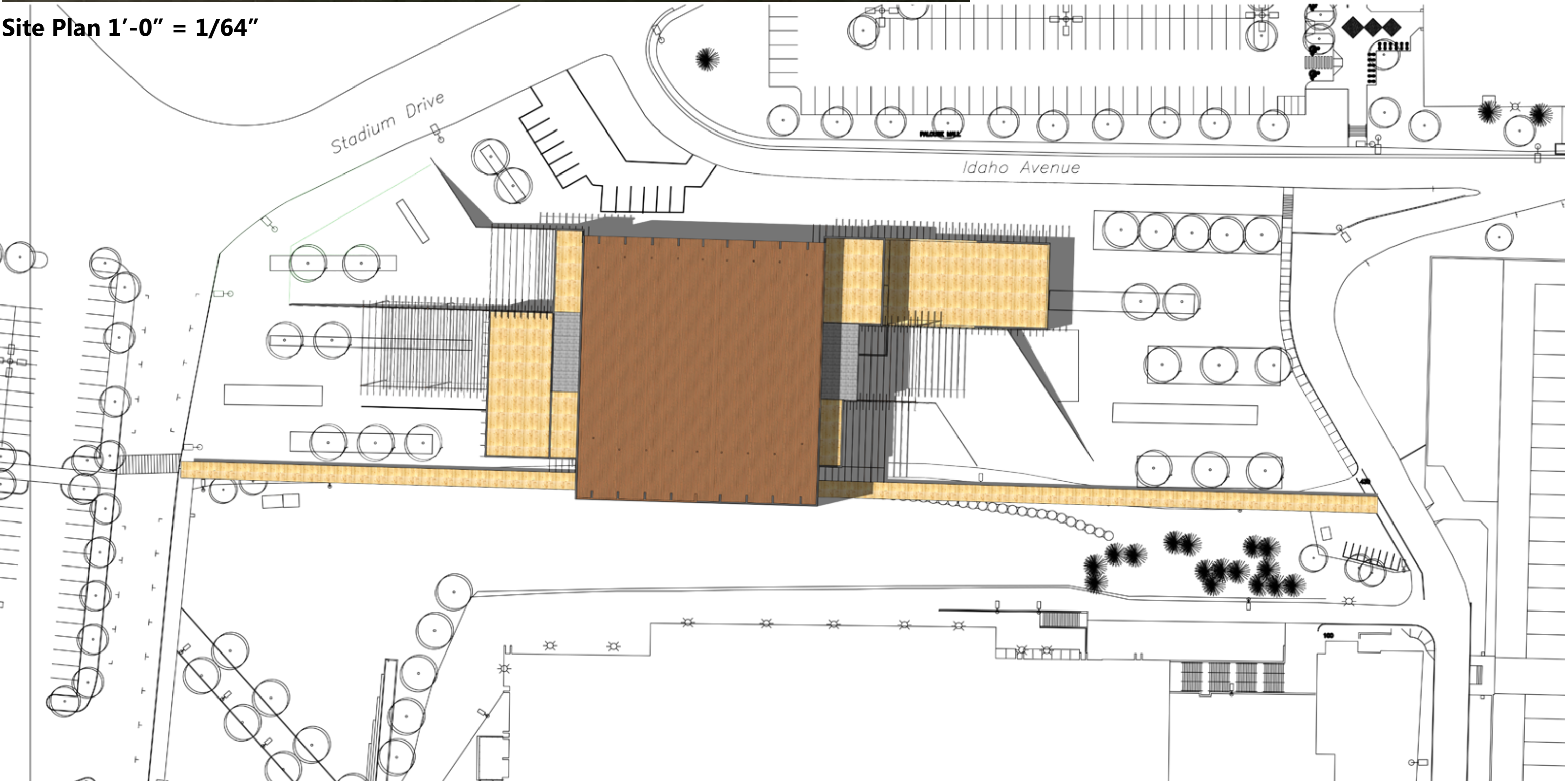
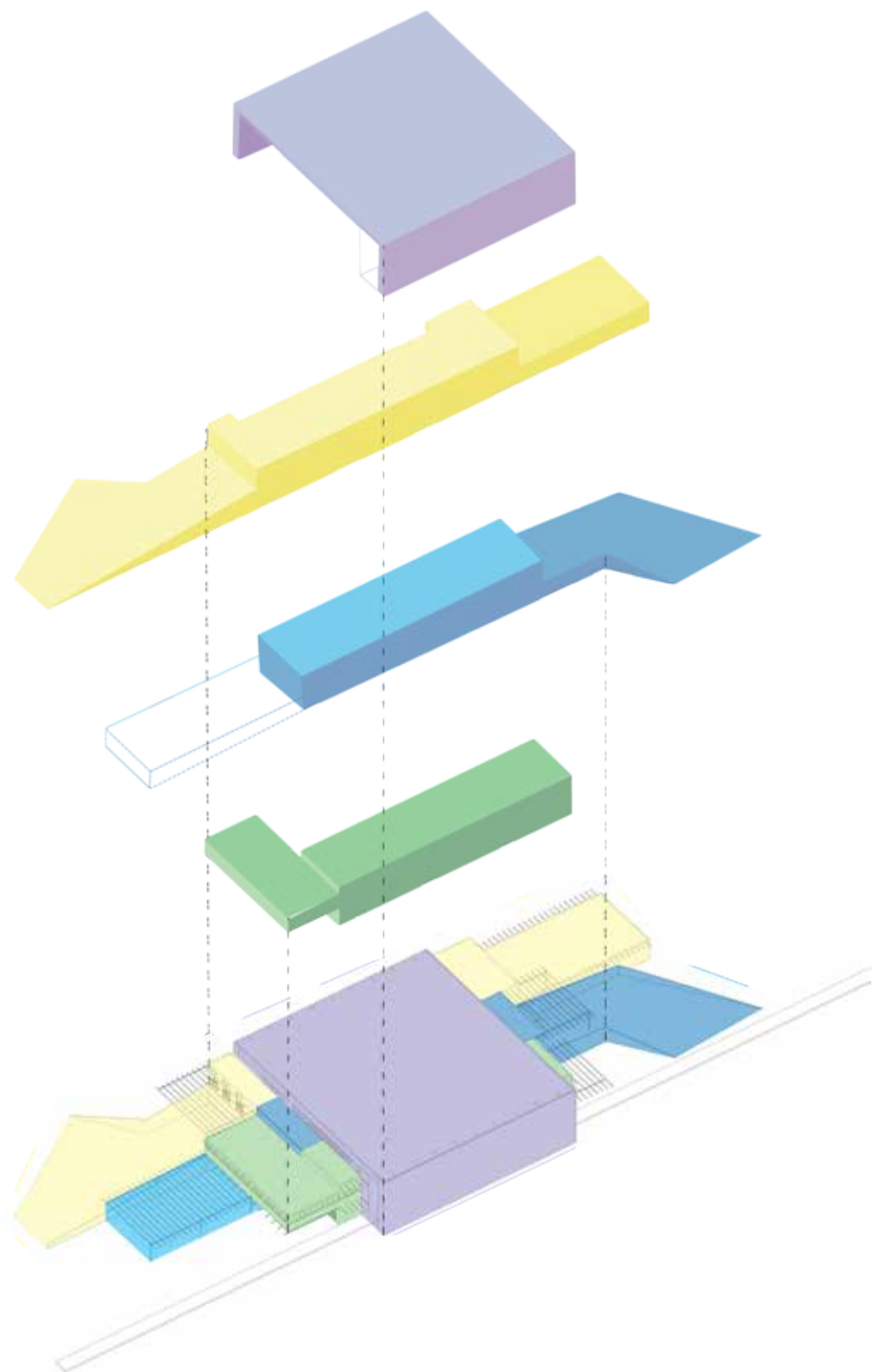


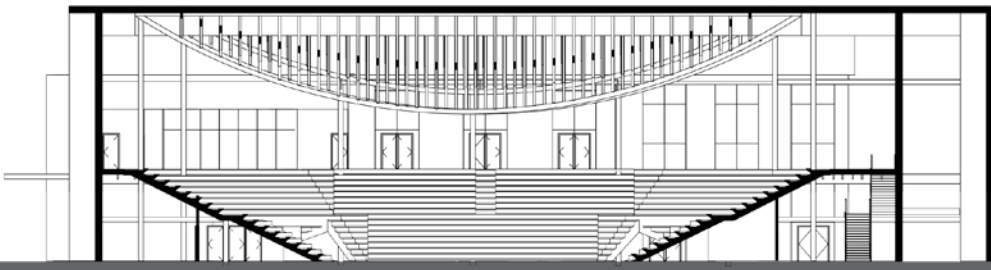
Illustration of threads



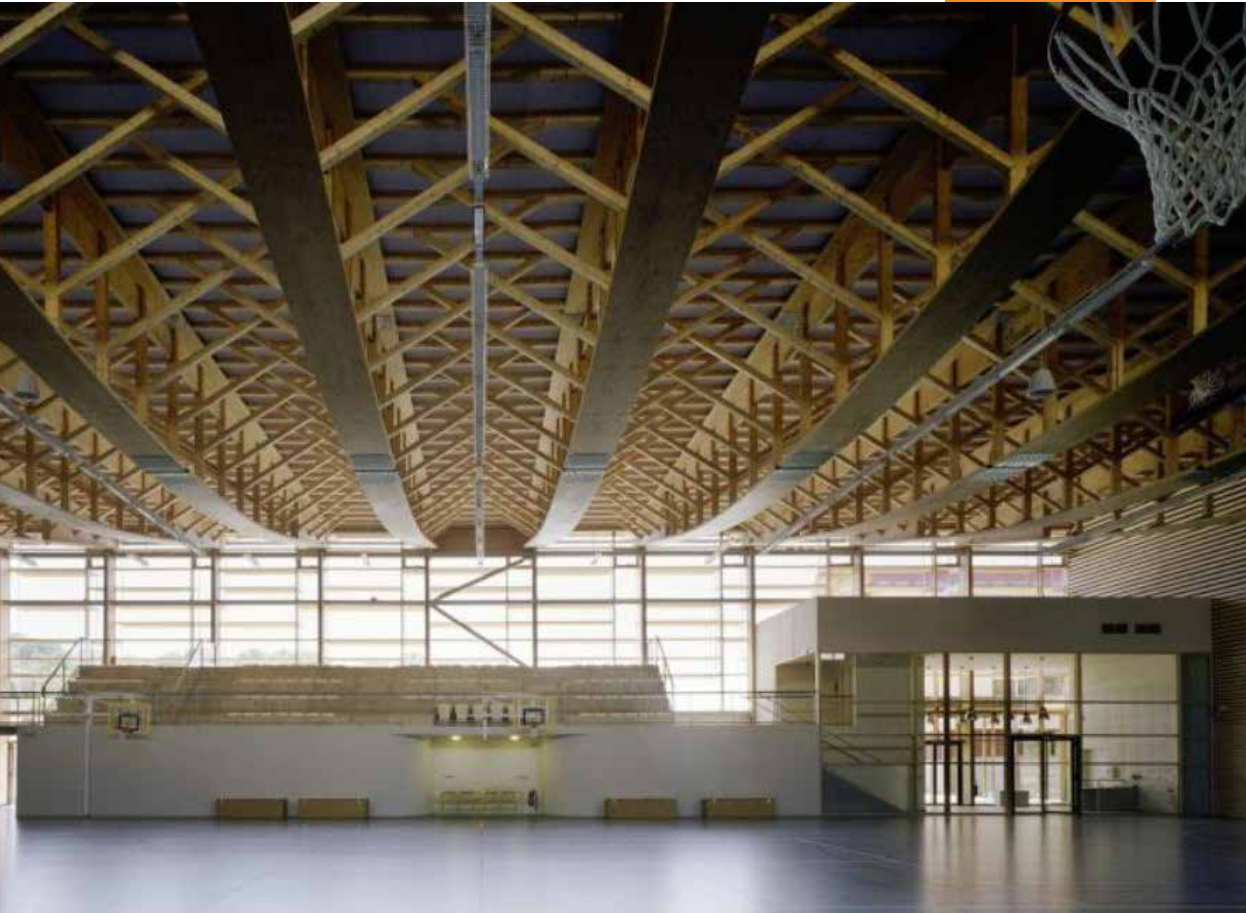
The intention behind this design was to experiment with weaving forms and spaces together; this having the parallel idea that the arena is integrating the Moscow community and University of Idaho students.

Transverse Section

32' 64'



Precedents



Sunny Gymnasium  
Tekhne Architects



Sheraton Malpensa Airport Hotel  
King Roselli Architetti

Longitudinal Section

32' 64'

South Elevation

32' 64'



West Elevation

32' 64'





# IDAHO ARENA

